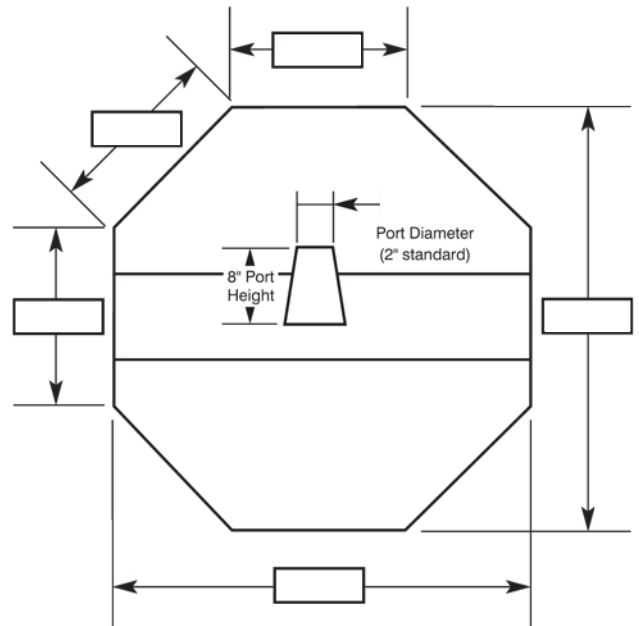


Negative Pressure (Used for Withdrawing)



Positive Pressure (Used for Filling)

### Features

Two access ports 2" in diameter and 8" tall (standard).  
Breathable filter Panel.  
Two vinyl windows allow for quick visual level checks.  
Securely holding the 10" long skirt in place is an elastic band and belt with buckle.

### Features

One Center access point, 8" tall (standard).  
Breathable Filter panel.  
Two vinyl windows allow for quick visual level checks.  
Securely holding the 10" long skirt in place is an elastic band and belt with buckle.

**All dimensions must be completed for a Quote to be given.**

## Quote Information

- Are you filling or withdrawing:
  - Filling (GP Positive Pressure)
  - Withdrawing (GN Negative Pressure)
- Cover Specifications:  
Please fill in the appropriate dimensions on the diagram.
- Port Specifications:
  - Port Diameter "A" (2" standard): \_\_\_\_\_
  - Port Height "B" (8" standard): \_\_\_\_\_
- Specify Color:  Blue  Khaki (brown)
- Quantity: \_\_\_\_\_

If more custom features are required, please enclose a drawing.  
For silk screen Items, a copy of printed name and logo must be provided.

## Contact Information

Company Name \_\_\_\_\_  
Contact Person \_\_\_\_\_  
Address \_\_\_\_\_  
City, State, Zip \_\_\_\_\_  
Phone ( ) - \_\_\_\_\_ ext. \_\_\_\_\_  
Fax ( ) - \_\_\_\_\_  
E-mail \_\_\_\_\_

**Please Fax to (815)337-3020 or  
E-mail to [sewing@macautomation.com](mailto:sewing@macautomation.com)**