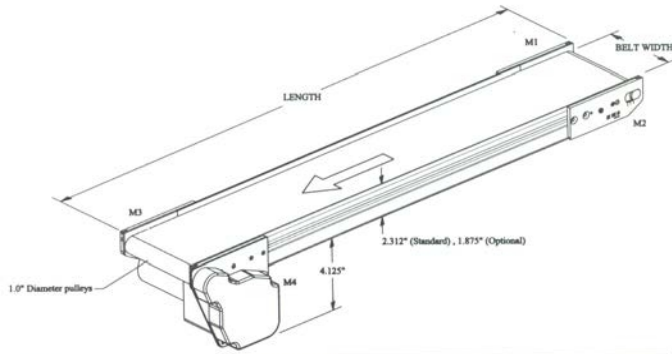


Quote Information



Quantity: _____
 Nominal Conveyor Length: _____ (72" max)
 Effective Belt Width: _____ (12" max)
 Frame Height: 2.312 (standard) 1.875
 (Standard take-up is cam style)
 Conveyor Style:
 Horizontal (standard) Incline Decline
 (Lengths and widths are limited for an Incline Style)
 If angled, desired angle: _____ °

-Legs or Stands-

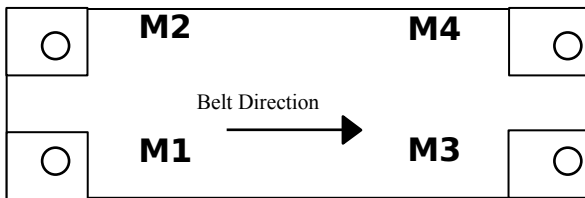
Height from floor: Infeed: _____" Discharge: _____"
 Do you require Adjustable Legs? Yes No
 Leg Position: Side (standard) Underneath
 Max Load on Conveyor: _____ lbs.

Support Stands (legs):

Extruded Aluminum Single Post Pedestal Telescoping Steel "T" Leg Assembly (std. on lengths 5' or less)

Floor Base: Casters (Wheels) Pads Base Plate (for Single Post Pedestal only) Other: _____

-Motor Position-



M1, M2, M3, M4 Mounted underneath

Supply Voltage: 110VAC 220VAC (both are single phase)

Belt Speed (fixed): 20 fpm 54 fpm **-OR-**

Belt Speed (variable): 0-20 fpm 0-54 fpm (both are DC)

-Controls-

Reversing Indexing Remote Mounting with cord and Heavy Duty Magnet to mount on side of press.

Control Signal: 24VDC 120VAC Dry Contact

-Belt Information-

Belt Material: .075" Thick White Polyurethane Anti-Static (standard) Polyurethane (PU)

Belt Color: White (Std.) Green (PU) Blue (PU) Other _____ (if available)

If Cleated, Height: No Cleats 20mm 30mm 40mm Other _____

Cleat Spacing: 15" (Std.) Other: _____"

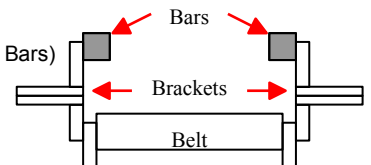
Part Size: Length _____ Width _____ Part Temperature: _____ °F

-Rail Information-

Style "A" (Stainless Steel, Standard Side Rail)

Style "B" (Adjustable UHMW Side Bars)

"X" = 2" 4" 6" 8" 10" 12"

Request For Quote -Low Profile/MAC Trac™ 100

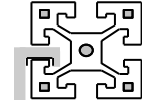
-Quick-Change Rail System-

What is the increment of part clearance that is required between the Press and the Conveyor?

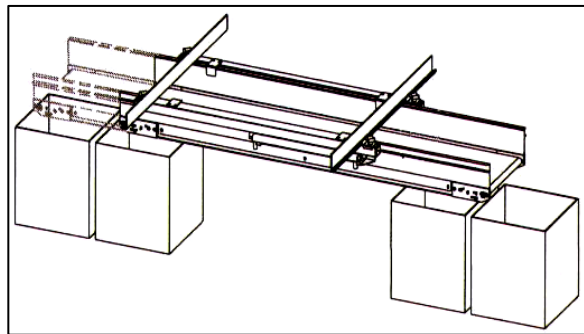
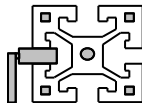
- 2"
 4"
 6"
 8"
 10"
 12"

Mounting Type:

- Sliding Track System



- Roller Track System
 (required if Pneumatic Air
 Cylinder Kit is chosen)



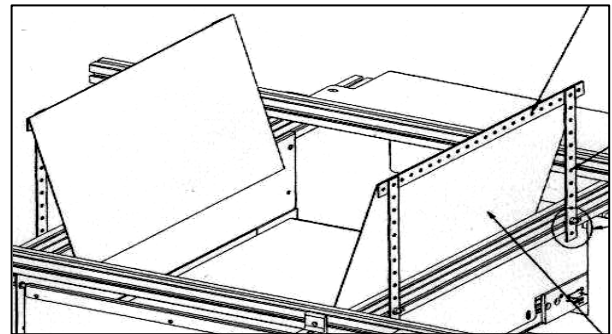
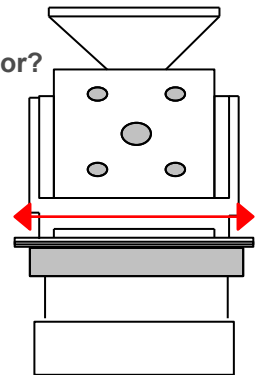
Pneumatic Air Cylinder Kit? (inches of stroke)

- 6"
 8"
 10"
 12"
 14"
 16"
 18"

(Roller Track System is required if this kit is chosen)

Depth across Press:

- Up to 36" Deep
 Up to 48" Deep

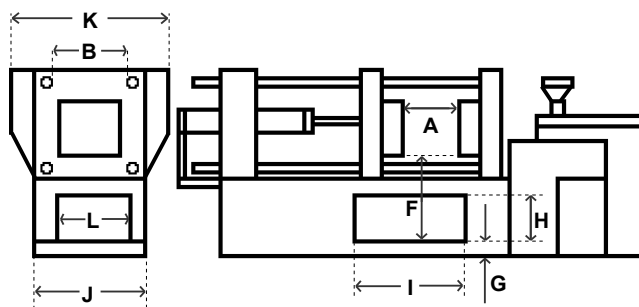


Quick-Change Containment Package

These components are used to create custom part containment. This is designed for the end-user to cut to fit. Includes standard hardware. Serves as a Hopper for the Quick Change Rail System.

- Yes
 No

-Press Dimensions-



- A:** _____ **H:** _____
B: _____ **I:** _____
F: _____ **J:** _____
G: _____ **K:** _____
(A = Operating Mold Open) **L:** _____

Please indicate units of measure:

- inches
 centimeters

Contact Information

Company Name _____
 Contact Person _____
 Address _____

 City, State, Zip _____
 Phone () - _____ ext. _____
 Fax () - _____
 E-mail _____

**Please Fax to (815)337-3020 or
 E-mail to sales@macautomation.com**