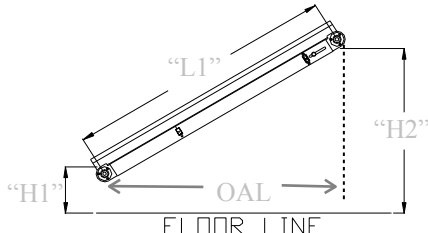


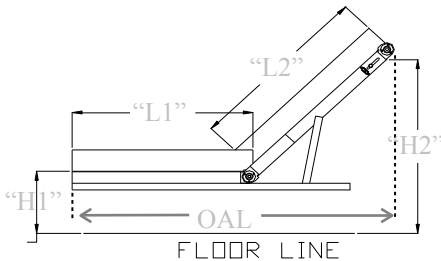
## Quote Information



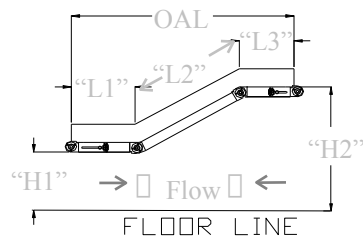
**Style "A"**



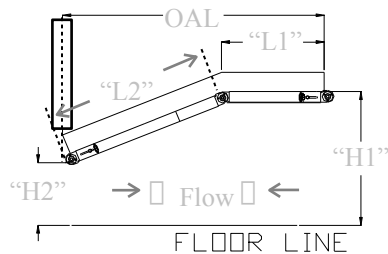
**Style "B"**



**Style "C"**



**Style "D"**



**Style "E"**

**Conveyor Style:**     "A"     "B"     "C"     "D"     "E"  
**Frame Material:**     Aluminum     Steel     Stainless Steel  
**Max load on conveyor:**  50#     75#     100#     200#     Other \_\_\_\_\_

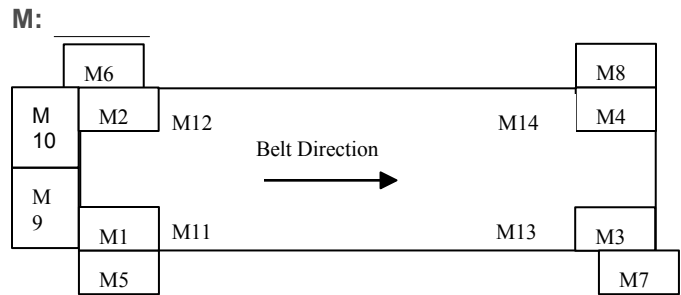
**-Conveyor Dimensions-**

**Length:**    L1: \_\_\_\_\_    L2: \_\_\_\_\_    L3: \_\_\_\_\_    OAL: \_\_\_\_\_  
**Height:**    H1: \_\_\_\_\_    H2: \_\_\_\_\_    Effective Belt Width: \_\_\_\_\_

**Part Temperature:** \_\_\_\_\_ °F  
**Leg Position:**     On Side (standard)     Underneath  
**Casters:**     4 (standard)     5" Swivel Locking     Non-Locking

**-Motor Information-**

**Motor Position:**  
 M1, M2, M3, M4  
 Mounted underneath.  
  
 M5, M6, M7, M8  
 Mounted on side.  
  
 M9, M10  
 Mounted on end.



M11, M12, M13, M14 – Mounted Underneath, closer to center. (not available on Aluminum Conveyors)

**Supply Voltage:**     110VAC (standard)     220VAC     440VAC  
                                   Single Phase     Three Phase

**Fixed Belt Speed:**     20 fpm     40 fpm     70 fpm

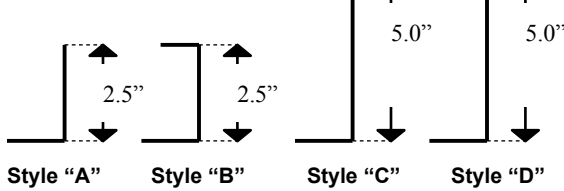
**Variable Belt Speed:**     AC     DC    **&**  
     6-20 fpm     12-40 fpm     21-70 fpm

**-Belt Information-**

**Belt Color:**     White (standard)     Green     Black  
                           Grey     Blue     Other \_\_\_\_\_  
**Belt Surface:**     Smooth (standard)     Tacky     Rough Top  
**Cleats:**     Yes     No  
**Cleats Spacing:**     15" (standard)     Other \_\_\_\_\_  
**Cleat Height:**     20mm (3/4")     30mm (1 1/4")     40mm (1 3/4")  
                                   Other \_\_\_\_\_  
**Belt Material:**     Hi-Temp (rated up to 500°)     Polyurethane (standard, rated up to 210°)  
                                   PVC (rated up to 180°)     Plastic     Wire Mesh     Flat Wire  
**If Mesh or Flat:**     Carbon Steel     Stainless Steel  
**V-Guide**     Yes     No (Standard on Style "C", "D" and "E")

**-Side Rails Information-**

Side Rail Style:  "A"  "B (standard)"  "C"  "D"  No Side Rail

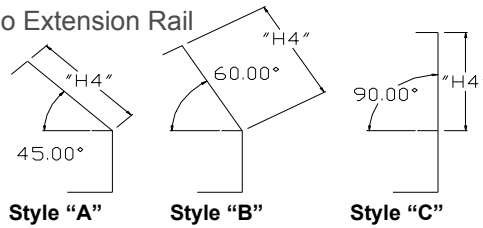


Note: styles "B" & "D" include a top return.

Other Height: \_\_\_\_\_" (custom charges may apply)

Side Rail Material:  Aluminum  Stainless Steel  
(aluminum only available in heights of 2.5" and 5.0")

Side Rail Extensions Style:  "A"  "B"  "C"  No Extension Rail



H4:  4"  6"  8"  12"  Other \_\_\_\_\_

Extension rails mount to Side Rails with or without a top return.

Extension Rail Endcap:  Standard  Other \_\_\_\_\_

**-Control Information-**

Control Location:  "A"  "B"  "C"  "D"  "E"  "F"

Control Type:  Fixed (panel)  Fixed (Saddle)  Remote

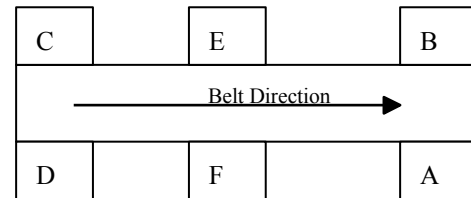
If Remote, Length of Cable required: \_\_\_\_\_' (15' standard)

**Control Options:**

- Photo-eye stops parts at discharge end of conveyor
- Photo-eye product flow control  Robotic Indexing
- Process Control.  Reversing  Indexing
- Foot-pedal start/stop  Foot-pedal override to clear belt or run at full speed.  Light Tower, if so Height \_\_\_\_\_

These are only a few common control options. Consult your MAC representative for other common control options available. MAC can supply any of your custom control requirements. If you have a special need, please specify on the last page.

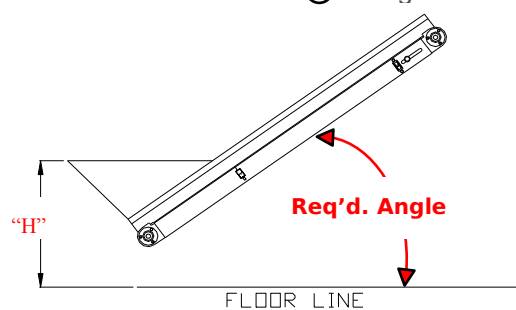
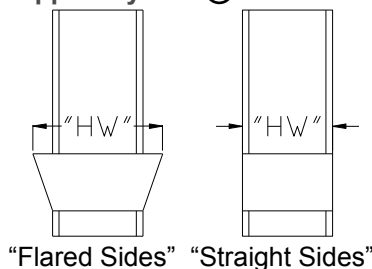
Customer Signal Voltage:  24VDC  120V, 1ph  Dry Contact



Please specify preferred control location even if your conveyor does not require a control. This will locate your ON/OFF.

**-Hopper Information-**

Hopper Style:  Flared Sides (standard width is 10" plus belt width)  Straight Sides



Desired Angle:  
 0°  20°  
 25°  30°  
 35°  40°  
 45°  Other \_\_\_\_\_°

Hopper Height "H": \_\_\_\_\_"  
 (top of hopper to floor)

Hopper Capacity: \_\_\_\_\_ Cubic Feet



# Request For Quote -Conveyor

### -Discharge Tray/Chute Information-

#### Stainless Steel Discharge Tray:

- Standard       Funnel

#### Stainless Steel Discharge Chute:

- Tapered Style, Covered

#### Tray/Chute Length

- 6"                       12"  
 18"                      24"  
 30"                      36"

### Contact Information

Company Name \_\_\_\_\_

Contact Person \_\_\_\_\_

Address \_\_\_\_\_

City, State, Zip \_\_\_\_\_

Phone                    (    )                    -                    ext. \_\_\_\_\_

Fax                        (    )                    -                    \_\_\_\_\_

E-mail \_\_\_\_\_

**Please Fax to (815)337-3020 or  
E-mail to [sales@macautomation.com](mailto:sales@macautomation.com)**

#### Additional Comments: