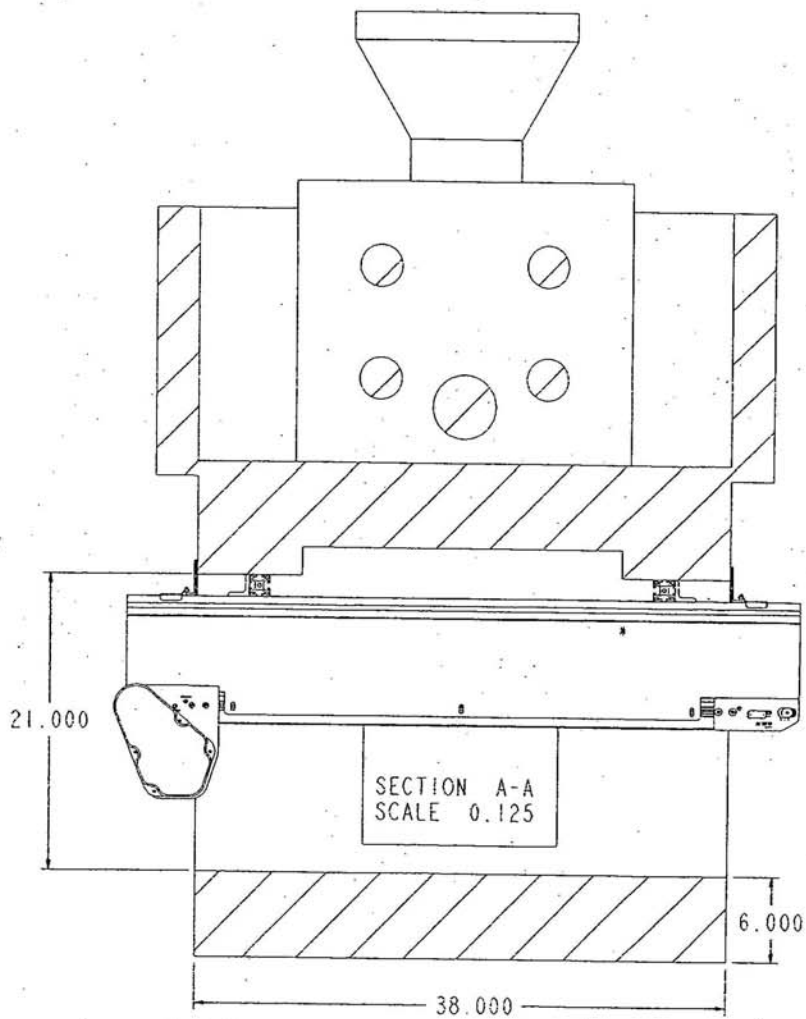

MAC

AUTOMATION CONCEPTS

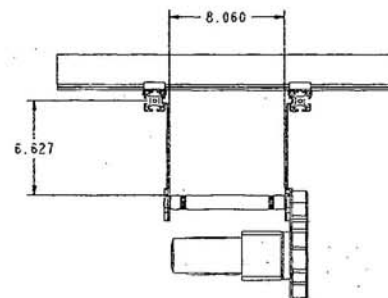
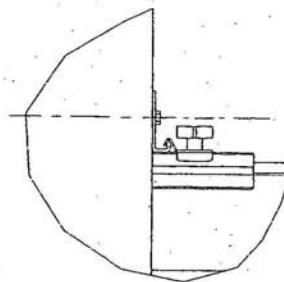
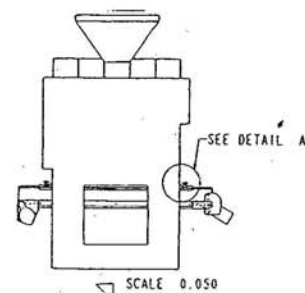
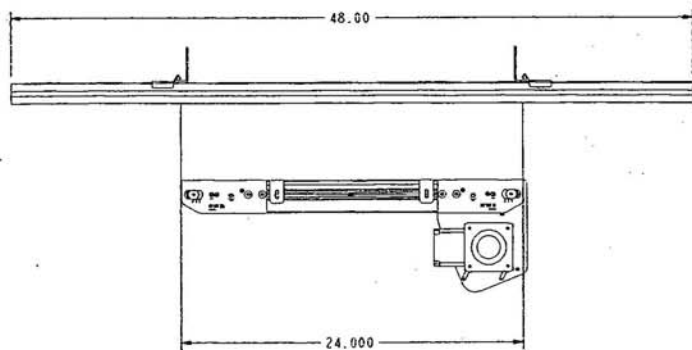
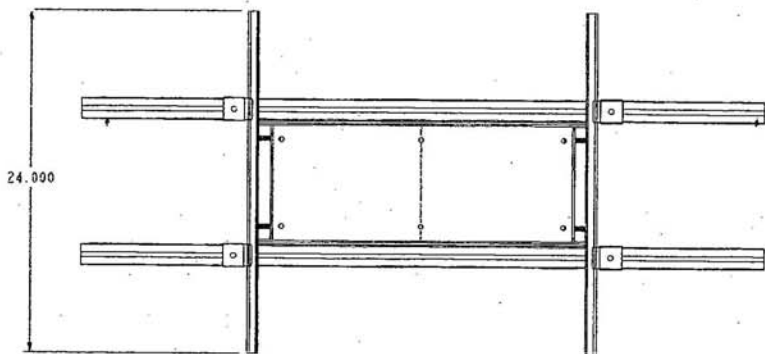
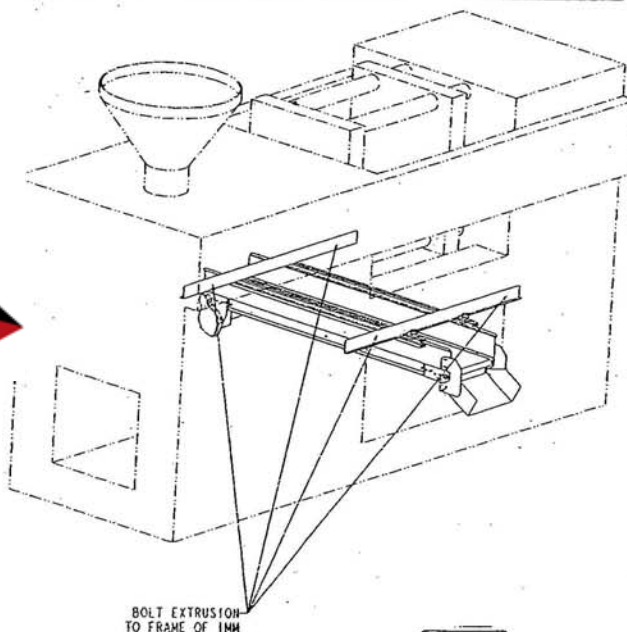


The Experts IN "Parts Management Systems"
MOLDING AUTOMATION CONCEPTS, INC.

1760 KILKENNY COURT • WOODSTOCK, IL 60098 • WITHIN IL-815/337-3000 • OUTSIDE IL-800/435-6979

MAC

AUTOMATION CONCEPTS

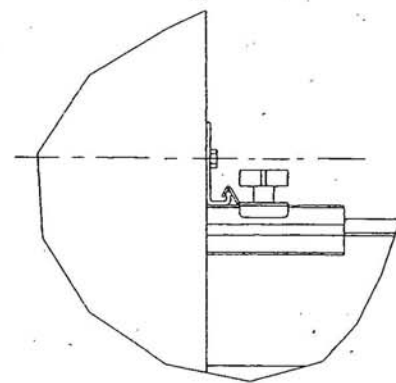
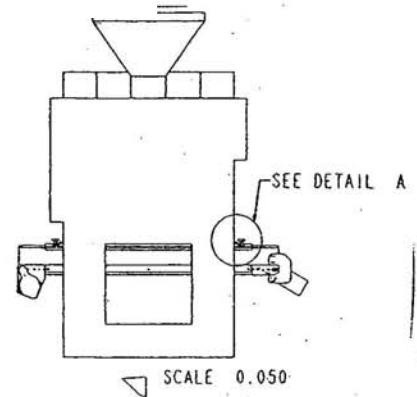
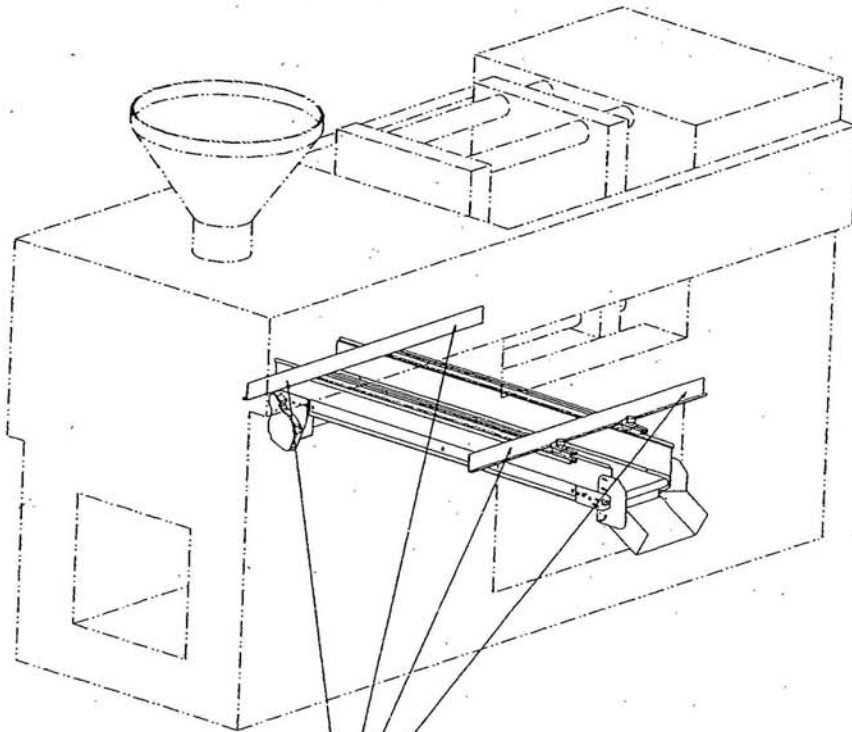


The Experts IN "Parts Management Systems"
MOLDING AUTOMATION CONCEPTS, INC.

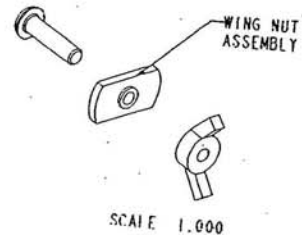
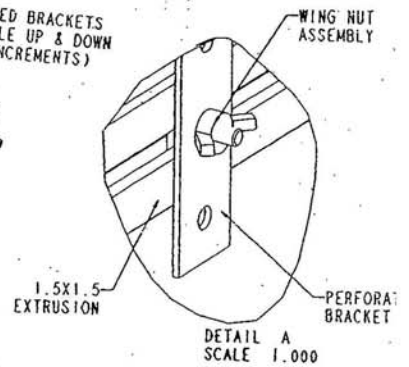
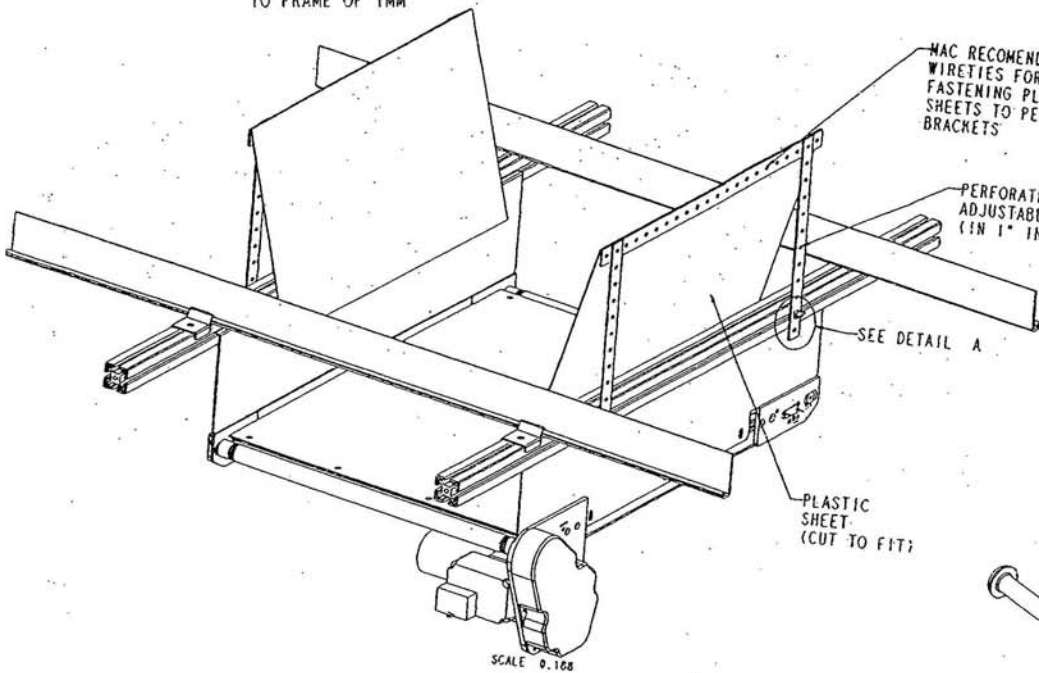
1760 KILKENNY COURT • WOODSTOCK, IL 60098 • WITHIN IL-815/337-3000 • OUTSIDE IL-800/435-6979

MAC

AUTOMATION CONCEPTS



BOLT EXTRUSION TO FRAME OF 1MM



Quick Change Rails Installation

1. Bolt “J” Extrusion (provided by MAC) to frame of IMM using 5/16-18 Button head screws, **Warning: Please be sure not to drill in to electrical wires this can cause some extensive repair to your machine.**
2. Once “J” Extrusion is in place please slide in the black knobs in to the 1.5”x1.5” extrusion top slot , this will hold the 1.5”x1.5” extrusion in place.(Please see Detail “A” top right hand picture)
3. Please center the extrusion according to the distance between the conveyor rails, slide in the conveyor rails in to the 1.5”x 1.5” inside slot. This will allow the conveyor to sit in place.
4. Please be sure that the 1.5”x1.5” extrusion is not pinching the conveyor rails to tight, this will not allow your conveyor rails to slide in or out easily. We want the conveyor rails to be free in the 1.5”x1.5” extrusion slots so conveyor can be easily remove for mold change or maintenance.
(Please see Detail “ A” top right hand picture .)
5. Tighten all black knobs to insure that 1.5”x1.5” extrusion won’t move do to vibration of IMM machine.
6. Your next step is to install your QCPC Package if Applicable.

Containment Package Assembly instructions

1. Once you have conveyor in place insert ¼-20 bolts with sliders into 1.5” X 1.5” Extrusion slot (see detail “A”)
2. Cut to fit plastics sheet according to your specifications and make appropriate holes to fasten in to 1” perforated brackets using wireties . Please refer to above drawing.
3. Perforated brackets can be adjustable up or down in 1” increments.
4. Please repeat installation on other side.