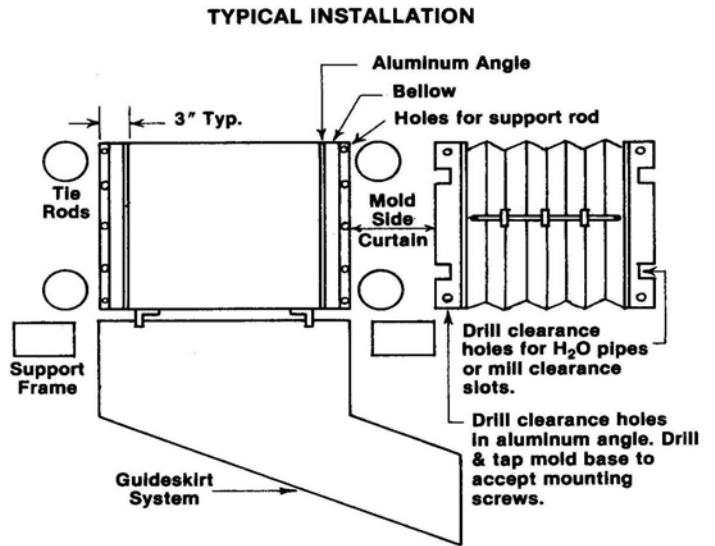
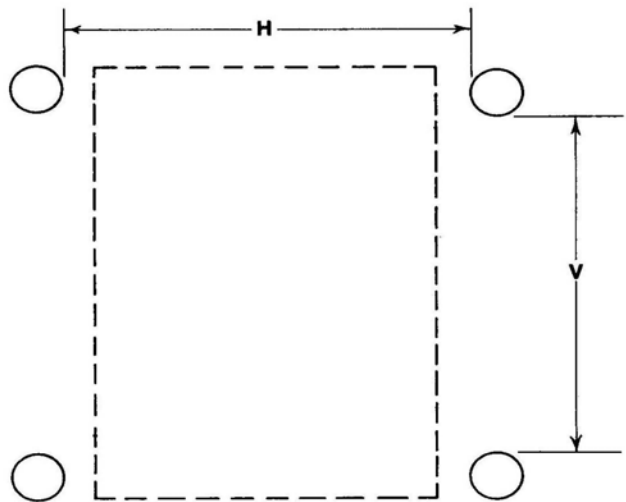




The Expert in "Parts Management Systems"

Mold Side Curtains – Quote Request Form



Distance Between:

Tie Rods: Horizontal ____ Vertical ____

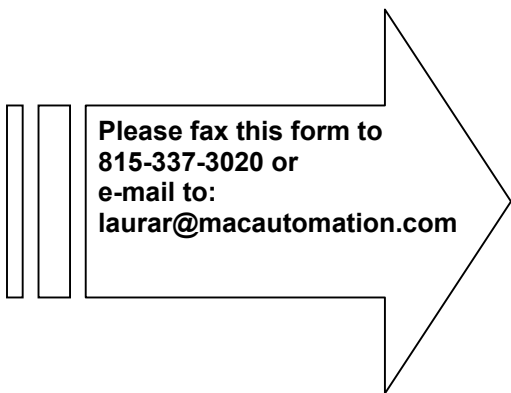
Mold: Horizontal ____ Vertical ____

Mold Open: ____
(Daylight)

Quantity: ____ Curtains sold individually – NOT AS PAIR.)

Notes:

- Side curtains require 3" gap between mold & tie bar. The curtain can only be as long as the tie bar spacing if adequate space does not exist.
- Alternative vertical panels are Clear Vinyl to provide visibility to the mold.
- Aluminum angle mounting brackets are designed to attach directly to the mold, no to the platen.
- Ensure adequate clearance between waterline fittings on the parting, line to allow the curtain to collapse in between when the mold is closed.
- Curtain open stroke and curtain length should not exceed 36".



Company Name _____

Contact Person _____

Address _____

City, State, Zip _____, _____, _____

Phone, Fax () - , () - _____

E-mail _____@_____