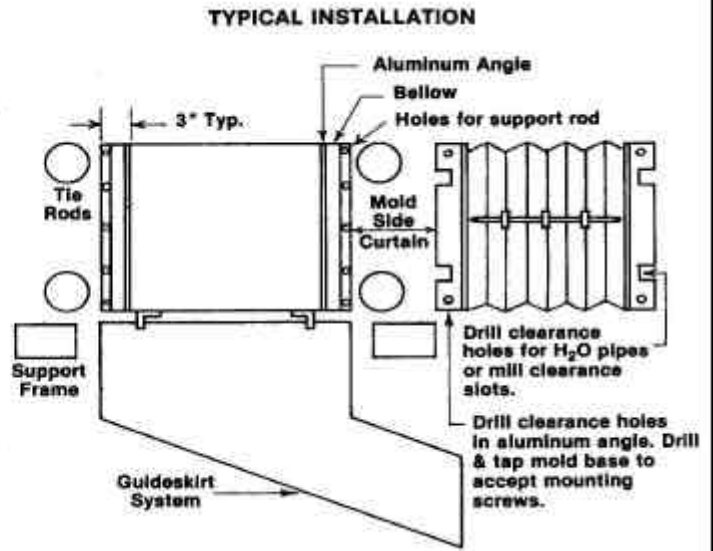
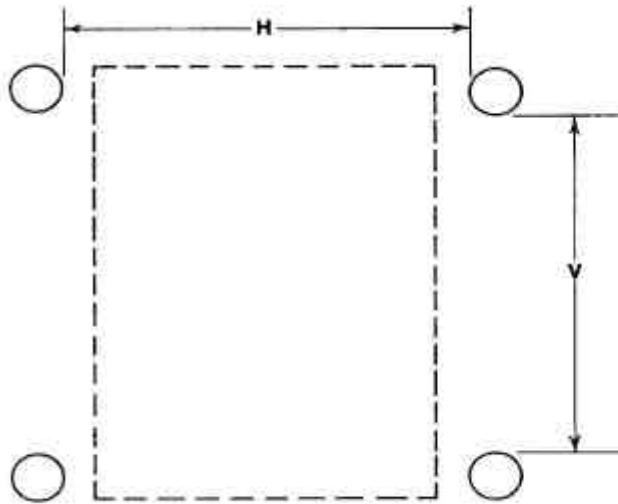




The Expert in "Parts Management Systems"

### Mold Side Curtains – Quote Request Form



Distance Between:

Tie Rods: Horizontal \_\_\_\_ Vertical \_\_\_\_

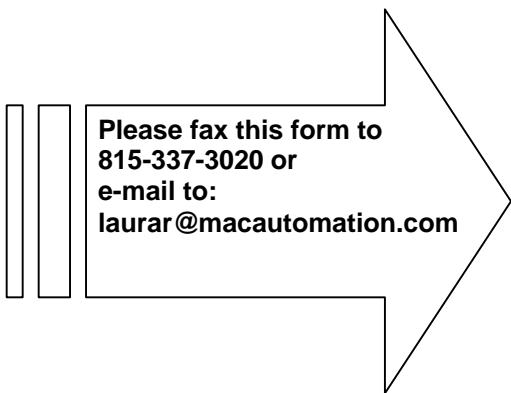
Mold: Horizontal \_\_\_\_ Vertical \_\_\_\_

Mold Open: \_\_\_\_  
(Daylight)

Quantity: \_\_\_\_ Curtains sold individually – NOT AS PAIR.)

Notes:

- Side curtains require 3" gap between mold & tie bar. The curtain can only be as long as the tie bar spacing if adequate space does not exist.
- Alternative vertical panels are Clear Vinyl to provide visibility to the mold.
- Aluminum angle mounting brackets are designed to attach directly to the mold, no to the platen.
- Ensure adequate clearance between waterline fittings on the parting, line to allow the curtain to collapse in between when the mold is closed.
- Curtain open stroke and curtain length should not exceed 36".



Company Name \_\_\_\_\_

Contact Person \_\_\_\_\_

Address \_\_\_\_\_

City, State, Zip \_\_\_\_\_, \_\_\_\_\_, \_\_\_\_\_

Phone, Fax ( ) - , ( ) - \_\_\_\_\_

E-mail @ \_\_\_\_\_