

THE EXPERT IN "PARTS MANAGEMENT SYSTEMS"

RJG Ready: Parts Handling and Sorting

Diverter

Underpress Conveyor with Quick Change Package & Part Diverter

- Automatic Part Sorting
- RJG Ready



Model #	S1-12-12 w/ 4" Siderails	S1-12-12 w/ 6" Siderails	S1-12-18 w/ 4" Siderails	S1-12-18 w/ 6" Siderails
LPA-36-12	\$2,890.00	\$2,902.00		
LPA-36-18			\$3,059.00	\$3,071.00
LPA-48-12	\$2,991.00	\$3,007.00		
LPA-48-18			\$3,181.00	\$3,197.00
LPA-60-12	\$3,093.00	\$3,113.00		
LPA-60-18			\$3,303.00	\$3,323.00
LPA-72-12	\$3,264.00	\$3,288.00		
LPA-72-18			\$3,495.00	\$3,521.00

This table includes the following in addition to the Quick Change Mounting Package below:

LPA-L-W: Low Profile Aluminum frame conveyor. Standard features include a 2.312" high extruded aluminum frame with a white polyurethane, anti-static belt, 1" diameter pulleys, needle roller bearings with seals, Two year limited warranty.

QCR1: Quick Change Side Rails: 4" high part clearance. Used on LPA conveyors with QCRA or QCRS option.

S-1 Part Diverter: Quick Change Rail S1 type diverting unit, 12" or 18" long x 12" wide with a 30 degree angle of decline for the internal tipping tray. The vertical height is approximately 7.5" or 10.5" tall. The tipping tray is padded with white polyurethane belt material. This product is designed to divert rejects or start up shots when given a signal from the RJG Relay. Good parts slide out through a chute to the front of the press while the rejects slide to the rear when a signal is received. A momentary, normally open dry contact closure is the method for directing product flow. N.O. dry contact is standard, 24 VDC or other voltages available. Standard Features Include: SS construction with mounting flanges designed to allow the unit to hang from the QCR attached to the IMM frame, or on a Free Standing leg-set connected to the LPA Conveyor, Regulator with solenoid valve located on a remotely mountable panel **Note:** Please provide IMM press dimension prior to order

Quick Change Mounting Package



QCRA: Quick Change Rail Attachment. This package includes (2) 36" pieces of proprietary "J" shaped extrusion, (2) 48" long square extrusions, (4) stainless steel mounting brackets, (4) tensioning knobs with threaded studs, and miscellaneous mounting hardware. This kit number is designed for presses up to 48" deep. End-user is to cut to fit for each application. Please note that 3" of extrusion at a minimum must protrude out each side of press for proper hardware spacing.

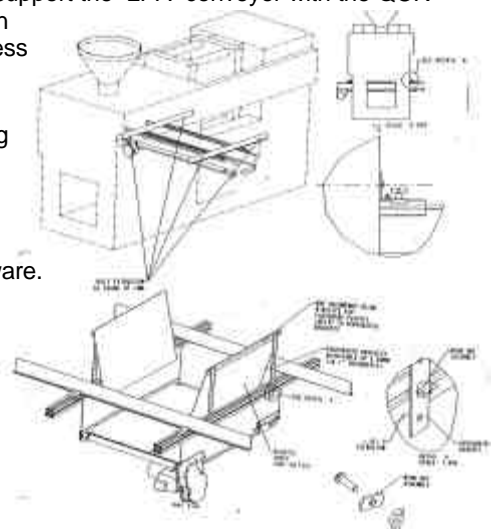
QCRS: Quick Change Roller System. This package includes the extrusion, rollers and lateral spacers needed to support the LPA conveyor with the QCR option. Please note that 3" of extrusion must protrude out on each side of press for mounting hardware.

QCPC: Quick Change Containment Package: Kit features 2' wide x 4' long Polypropylene sheet with (2) stainless steel perforated "T"-Strips, 1" x 1" x 4' long. These components are used to

create custom part containment. This is designed for the end-user to cut to fit, designed to be used with either QCRS or QCRA options. Includes standard hardware.



1760 Kilkenny Court
 Woodstock, IL 60098
 Phone: 815-337-3000
 Fax: 815-337-3020
 E-mail: sales@macautomation.com
 www.macautomation.com

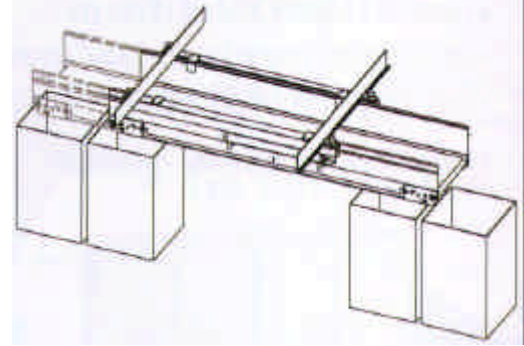
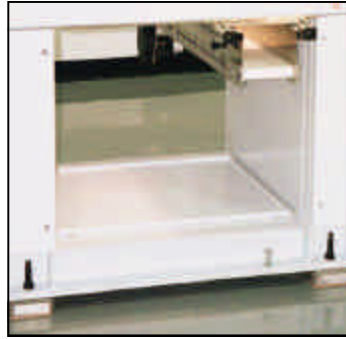


THE EXPERT IN "PARTS MANAGEMENT SYSTEMS"

Indexing

Underpress Conveyor with Quick Change Package & Pneumatic Positioning

- **Multiple container capability on either side of the press**
- **Higher profile than the S1-Diverter.**
 - **When floor to conveyor elevation is minimal**
 - **Allows easier transition to a Beside-the-Press, Automatic Box or Tote Fill System.**



Model #	QCP-12 w/4" rails	QCP-12 w/6" rails	QCP-18 w/4" rails	QCP-18 w/6" rails
LPA-36-12	\$2,250.00	\$2,262.00		
LPA-36-18			\$2,338.00	\$2,350.00
LPA-48-12	\$2,351.00	\$2,367.00		
LPA-48-18			\$2,460.00	\$2,476.00
LPA-60-12	\$2,453.00	\$2,473.00		
LPA-60-18			\$2,582.00	\$2,602.00
LPA-72-12	\$2,624.00	\$2,648.00		
LPA-72-18			\$2,774.00	\$2,800.00

This table includes an LPA Conveyor with Side Rails, Quick Change Mounting Package, plus the following:

QCP-12 or QCP-18: Quick Change Pneumatic air cylinder kit for LPA series conveyors. This is used to allow front to back movement for LPA conveyors with QCR & QCRS options along with required control "CT" number. This movement requires a momentary signal from your press and will include a relay which will allow the parts to clear before retracting the conveyor to the home position. Kit includes a 12" or 18" stroke pneumatic air cylinder with filter, regulator and valve kit, 80 PSI requirement. Flow controls, and mounting brackets. Includes hoses from valves to air.

Part Number	Description	Price
OR2-D	Lynx Dual Relay Output Module	\$325.00
DIN/LX-D	Lynx Comm. Adaptor	\$195.00
CL-LX5-0.3M	Lynx .3M Patch Cable	\$35.00
CL-LX5-6M	Lynx 6M Patch Cable	\$45.00
J-LX1	Lynx Panel Mount Connector	\$25.00

Item	Description	Price
CT7A	Automatic Reversing Control Pkg	\$654.00
Taller Rails	2" to 12" height	Ask factory
Custom LPA Sizes	Widths from 2" , Lengths to 8'	Ask factory
Custom QCP	Many sizes available	Ask factory
Custom S1 Diverter	Many sizes available	Ask factory