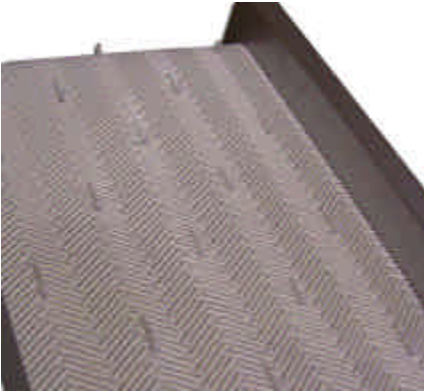


THE EXPERT IN "PARTS MANAGEMENT SYSTEMS" Parts/Runner Separators

MAC Automation currently offers 3 standardized types of degated part/runner separation systems. They are as follows: SH series separating handlers, offered in both pin (finger) type and textured belt. Screw Type Separators (most commonly used) and roller separators

SH Separating Handler with Pin or Textured Belt



Designed to work in tandem with MAC Small Frame series conveyors. Units are designed to accept the overall width of the SF series, this design allows the frame to get tremendously close to the separator for tight tolerances. The following are the lengths and widths offered. Included is a T-type steel telescoping stand, standard AC fixed speed parallel shaft gear-motor. Unit has adjustable angle from 0- negative 45 degrees. Your choice of pin heights 1-1/8" tall and 2" tall. Belt material is White Polyurethane with stainless staple lace, holes are punched on 1" centers on a staggered pattern. Pins have a shoulder to hold place in the belt, but the pins easily removed to be repositioned for different patterns. A textured, white polyurethane belt with chevron pattern and an endless splice is available for applicable runners and parts.



- Lengths: 1'(actual 16" long), 2'(actual 28" long), 3'(actual 40" long), 4'(actual 52" long)
- Widths: 9", 13", 15", 21", 27", between frame width
- T-leg set is adjustable from 18-30"

Options: DC adjustable speed drives, In-feed and discharge chutes, Connect to conveyor leg set.

Screw Type Separators

A screw type separator is used to separate small parts from sub-runners, ideally suited for small to medium number of cavities and runners. A gap separation method is used between the screw and the adjustable angle slide plate. The smaller (shorter of the two pieces) fall through the gap. MAC Automation currently offers two different styles of screw type separator, the E series and the B series.

NOTE: Multi-Screw Separators are available to handle difficult separation and higher volumes. Consult factory.

E Series

The E Series is an extruded aluminum design with a variable speed drive internal power roller with safety stall low torque. The E series also has a 24 VDC output power and 110 VAC input power. The Units come in 24" and 36" standard lengths. Other lengths and configurations available. Consult factory. Extruded aluminum, adjustable height legs and 4" diameter casters are included. Gap adjustment is simple and repeatable with a scale on the unit. Also available are in-feed, discharge chutes for bottom and end. System can be freestanding or attached under the press or at the end of an inclined conveyor. Custom takeoffs are available to divert parts to storage containers or inspection tables via gravity or an Airveyor.

NOTE: Best performance when placed inline with feeding conveyor, but can also be placed at right angles.



1760 Kilkenny Court
Woodstock, IL 60098
Phone: 815-337-3000
Fax: 815-337-3020
E-mail: sales@macautomation.com
www.macautomation.com

THE EXPERT IN "PARTS MANAGEMENT SYSTEMS"

Screw Type Separator continues...

B Series

The B Series is an older design, constructed from steel and has an internal AC powered roller as a standard drive for the screw. This particular design is the 1st generation. The slide plate has a pivoting adjustment and lock down handle. The screw is also adjustable in its vertical height, through the adjustment of two knobs. The units frame is adjustable in its height from min. to max. adjustments. The screw lengths available are 24", 30", 36".

Roller Separators

Roller separators are a long time industry standard, typically used with large X, H or linear type runner with no sprues. MAC currently offers three different types. A single roller, a Two roller and a Three roller units. They are designed to work with standard belt conveyor feed units in widths of 6", 12", 18" and 24". The units can have either an internal drive or external parallel shaft or right angle type gear-motor. A special request can be made to have the unit slave driven from the feeding conveyor if different speeds or non-adjustable speeds are required. Units come standard with T-leg support 18"-30" adjustable height leg or can be attached at the end of an inclined conveyor. Fixed speed AC motors are standard with AC or DC variable speed drives available.

Single Roller

A single roller is either slave-driven off the end of the feeding conveyor or self powered. This single roller is usually 1.9" diameter fixed speed when self powered. Other diameters are available when unit is slave driven. Roller is lagged with ruff-top PVC black, or Green belt material. The spacing between the feeding conveyor and the roller is adjustable

Two Roller

Two rollers are either slave driven off the end of the feeding conveyor or self powered. The two rollers are usually 1.9" diameter fixed speed when self powered. Other diameters are available when unit is slave driven. Roller is lagged with ruff-top PVC black, or Green belt material. The spacing between the feeding conveyor and the rollers are adjustable. Gap spacing between the two rollers is also adjustable.

Three Rollers

Three rollers are either slave driven off the end of the feeding conveyor or self powered. The three rollers are usually 1.9" diameter fixed speed when self powered. Other diameters are available when unit is slave driven. Roller is lagged with ruff-top PVC black, or Green belt material. The spacing between the feeding conveyor and the rollers are adjustable. Gap spacing between the two rollers is also adjustable.

Specialty Separators

Vibratory Separator

A vibratory separator may be suggest or used in applications where other separators just won't work. The vibratory unit consist of the vibratory motor and controller on a stand. The unit has a deck of either stainless steel with perforations or bars constructed out of stainless material or UHMW machine bars. The process uses a feed conveyor or a chute to discharge parts onto a deck section which turns into the separating deck. The shot is vibrated toward the discharge end, allowing for the smaller pieces to fall through the gaps and the larger pieces to be conveyed out the end. Different decks or bars can be substituted for different part/runner configurations. The sizing of the unit is application specific – please consult factory.

Please see spec sheets for more information on individual Part/Runner Separators.

NOTE: Images shown are for examples only. They may not resemble exact descriptions of product.

✦ 1760 Kilkenny Ct.
Woodstock, IL 60098

✦ Ph: 815-337-3000
✦ Fx: 815-337-3020

✦ sales@macautomation.com
www.macautomation.com